



1010 2<sup>nd</sup> Avenue SW  
Cedar Rapids, IA 52404  
319:362-3271  
[www.villageneedlework.com](http://www.villageneedlework.com)

## Conversion Charts / Tables

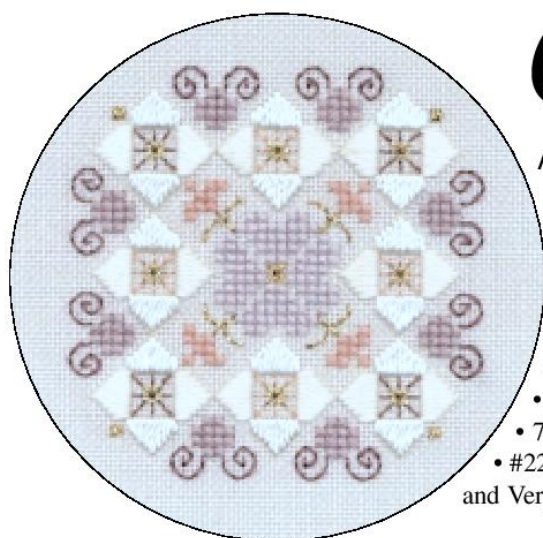
The following conversion charts are provided for your information.

Use such conversion tables/charts *only as a guide* . . . suggestions if you want to use a substitute.  
The colors from one thread/fiber company to another are not going to be exactly the same.

### DMC / ANCHOR Conversions

DMC	ANCHOR
Black	403
Ecru	387
White	2
208	110
209	109
210	108
211	342
221	897
223	895
224	893
225	1026
300	352
301	1049
304	1006
307	289
309	42
311	148
312	979
315	1019
316	1017
317	400
318	399
319	218
320	215
321	9046
322	978
326	59
327	100
333	119

DMC	ANCHOR
334	977
335	38
336	150
340	118
341	117
347	1025
349	13
350	11
351	10
352	9
353	6
355	1014
356	5975
367	217
368	214
369	1043
370	855
371	854
372	853
400	351
402	1047
407	914
413	236
414	235
415	398
420	374
422	943
433	358
434	310
435	1046
436	1045
437	362



# Captured Heart

A SILK AND METALLIC THREAD DESIGN

BY JUDY DIXON

## Materials needed:

- 2.5m skein of each: Kreinik Silk Mori® 6123, 6124, 6126, 1092
- 10m Kreinik Silk Serica® 7124
- Kreinik Very Fine (#4) Braid™ 002HL
- 7" x 7" piece of 28-count Light Grey Jobelan
- #22 Tapestry needle for Silk Serica, and #24 Tapestry needle for Silk Mori and Very Fine (#4) Braid

Design size: 40x x 40h

## To begin:

1. Moisturize your hands with a non-greasy hand cream to keep the silk from snagging on rough fingers.
2. Separate strands of Silk Mori by loosening the slip knot holding the thread ends together in the skein. Cut a working length of 15-inches, and pull out one ply at a time.
3. Each square on the graph represents two fabric threads.

## Stitching instructions & Color Key:

× Cross stitch the center area (which is made up of four heart shapes) using two strands of Silk Mori 6123 Light Dusty Lavender.

- Cross stitch flower buds using two strands Silk Mori 1092 Lightest Wood Violet.

— Backstitch vines with one strand Very Fine Braid 002HL Gold Hi Lustre.

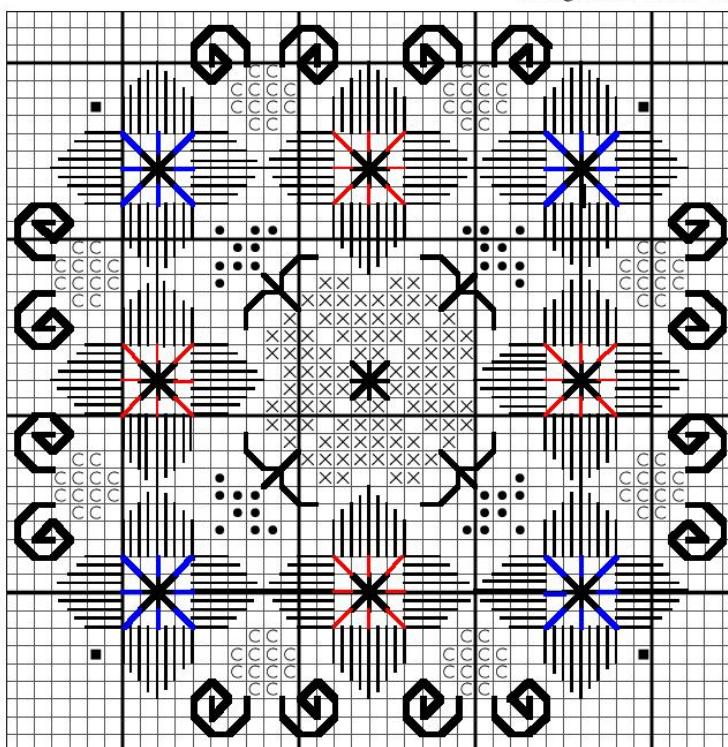
✱ Add the Algerian Eyelet in the centre of the hearts using one strand Very Fine Braid 002HL.

||| Satin stitch all Kloster blocks using Silk Serica 7124 Cream. Let your needle dangle frequently to let the thread return to its twist (or apply a slight countertwist if you notice Silk Serica becoming too tightly twisted or untwisted as you lay each stitch).

✱ In the centre of each Kloster-block flower, add an Algerian Eyelet worked over four threads using Very Fine (#4) Braid 002HL. To complete the four outside flowers, backstitch (delineated by the blue lines) using one strand of Silk Mori 6126 Dark Dusty Lavender. Finish the centres of the four remaining flowers by backstitching (delineated by the thin red lines) with one strand Silk Mori 1092 Lightest Wood Violet.

○ Cross stitch the eight outer areas using two strands Silk Mori 6124 Medium Dusty Lavender. Then add the backstitched accents made with one strand Silk Mori 6126 Dark Dusty Lavender (delineated by the heavy black lines).

- Create Smyrna crosses with one strand Very Fine Braid 002HL.

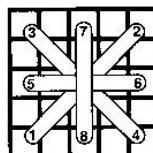


For additional tips on working with silk threads, call our Consumer Info line at 1-800-537-2166 or visit the Silk Mori and Silk Serica pages on [www.kreinik.com](http://www.kreinik.com).

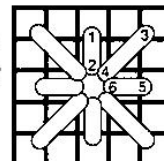


© Copyright 2000 Kreinik Mfg. Co., Inc. May be reproduced but not sold.

SMYRNA  
CROSS



ALGERIAN  
EYELET





1010 2<sup>nd</sup> Avenue SW  
Cedar Rapids, IA 52404  
319:362-3271  
[www.villageneedlework.com](http://www.villageneedlework.com)

DMC	ANCHOR
444	290
445	288
451	233
452	232
453	231
469	267
470	267
471	266
472	253
498	1005
500	683
501	878
502	877
503	876
504	1042
517	162
518	1039
519	1038
520	862
522	860
523	859
524	858
535	401
543	933
550	102
552	99
553	98
554	96
561	212
562	210
563	208
564	206
580	281
581	280
597	1064
598	1062
600	59
601	57
602	63
603	62
604	55
605	1094
606	334

DMC	ANCHOR
608	332
610	889
611	898
612	832
613	831
632	936
640	903
642	392
644	830
645	273
646	8581
647	1040
648	900
666	46
676	891
677	886
680	901
699	923
700	228
701	227
702	226
703	238
704	256
712	926
718	88
720	326
721	925
722	323
725	305
726	295
727	293
729	890
730	845
731	924
732	281
733	280
734	279
738	361
739	387
740	316
741	304
742	303
743	302



1010 2<sup>nd</sup> Avenue SW  
Cedar Rapids, IA 52404  
319:362-3271  
[www.villageneedlework.com](http://www.villageneedlework.com)

DMC	ANCHOR
744	301
745	300
746	275
747	158
754	1012
758	868
760	1022
761	1021
762	234
772	259
775	128
776	24
778	968
780	309
781	308
782	307
783	306
791	178
792	941
793	176
794	175
796	133
797	132
798	131
799	136
800	144
801	359
806	169
807	168
809	130
813	161
814	45
815	43
816	1005
817	13
818	23
819	271
820	134
822	390
823	152
824	164
825	162
826	161

DMC	ANCHOR
827	160
828	9159
829	906
830	277
831	277
832	907
833	907
834	874
838	1088
839	1086
840	1084
841	1082
842	1080
844	1041
869	944
890	218
891	35
892	33
893	28
894	27
895	1044
898	360
899	52
900	333
902	897
904	258
905	257
906	256
907	255
909	923
910	229
911	205
912	209
913	204
915	1029
917	89
918	341
919	340
920	1004
921	1003
922	1003
924	851
926	850





1010 2<sup>nd</sup> Avenue SW  
Cedar Rapids, IA 52404  
319:362-3271  
[www.villageneedlework.com](http://www.villageneedlework.com)

DMC	ANCHOR
927	848
928	274
930	1035
931	1034
932	1033
934	862
935	861
936	269
937	268
938	381
939	152
943	188
945	881
946	332
947	330
948	1011
950	4146
951	1010
954	203
955	206
956	40
957	50
958	187
959	186
961	76
962	75
963	73
964	185
966	206
970	316
971	316
972	298
973	297
975	355
976	1001
977	1002
986	246
987	244
988	243
989	242
991	1076
992	1072
993	1070

DMC	ANCHOR
995	410
996	433
3011	846
3012	844
3013	842
3021	905
3022	8581
3023	1040
3024	397
3031	905
3032	903
3033	391
3041	871
3042	870
3045	888
3046	887
3047	852
3051	681
3052	262
3053	261
3064	883
3072	847
3078	292
3325	129
3326	36
3328	1024
3340	329
3341	328
3345	268
3346	267
3347	266
3348	264
3350	59
3354	74
3362	263
3363	262
3364	260
3371	382
3607	87
3608	86
3609	85
3685	1028
3687	68



1010 2<sup>nd</sup> Avenue SW  
Cedar Rapids, IA 52404  
319:362-3271  
[www.villageneedlework.com](http://www.villageneedlework.com)

DMC	ANCHOR
3688	66
3689	49
3705	35
3706	33
3708	31
3712	1023
3713	1020
3716	25
3721	896
3722	1027
3726	1018
3727	1016
3731	76
3733	75
3740	873
3743	869
3746	1030
3747	120
3750	1036
3752	1032
3753	1031
3755	140
3756	1037
3760	169
3761	928
3765	170
3766	167
3768	779
3770	1009
3772	1007
3773	1008
3774	778
3776	1048
3777	1015
3778	1013
3779	1012
3781	904
3782	899
3787	273
3790	393
3799	236
3801	1098
3802	1019

DMC	ANCHOR
3803	972
3804	63
3805	62
3806	62
3807	122
3808	1068
3809	1066
3810	1066
3811	1060
3812	188
3813	875
3814	1074
3815	877
3816	876
3817	875
3818	923
3819	278
3820	306
3821	305
3822	295
3823	386
3824	8
3825	323
3826	1049
3827	311
3828	373
3829	901
3830	5975
3831	29
3832	28
3833	26
3834	100
3835	98
3836	90
3837	100
3838	177
3839	176
3840	117
3841	9159
3842	164
3843	1089
3844	410
3845	1089



1010 2<sup>nd</sup> Avenue SW  
Cedar Rapids, IA 52404  
319:362-3271  
[www.villageneedlework.com](http://www.villageneedlework.com)

DMC	ANCHOR
3846	1090
3847	1076
3848	1074
3849	1070
3850	189
3851	187
3852	306
3853	1003
3854	313
3855	311
3856	1010
3857	936
3858	1007
3859	914
3860	379
3861	378
3862	358
3863	379
3864	376
3865	2
3866	926
5200	1

	1010 2 <sup>nd</sup> Avenue SW Cedar Rapids, IA 52404 319:362-3271 <a href="http://www.villageneedlework.com">www.villageneedlework.com</a>
---	--

## Madeira / Anchor Conversions

These charts are provided for your convenience, should you wish to use traditional floss for your project.

The following conversions are suggestions – in our opinion, the closest matches available. Where there is more than one Anchor color listed, it's because Madeira has no exact match.

Madeira	Anchor	Madeira	Anchor	Madeira	Anchor
Black	403		103	1507	263
Ecu	276		342		846
	926	0802	108	1508	861
White	1	0803	109	1509	859
White	2	0804	94	1511	858
0101	275		110	1513	860
	386		111	1514	862
0103	288	0806	871	1604	260
	289		872	1604	264
0104	290	0807	869	1605	842
0105	291		870	1607	681
0107	298	0808	968		843
0108	297	0809	969		844
0109	295		1016	1610	179
0110	293	0809	1017		945
0111	292	0810	1018	1613	281
	300		1019	1614	845
0112	301	0811	896		924
0113	305		1027	1701	1042
0114	302	0812	895	1702	875
	303	0813	894	1703	876
	306		1021	1704	877
	313	0814	271	1705	879
0201	314	0901	117	1706	851
0202	304	0902	118	1707	850
0202	316	0903	119	1708	274
0205	329		1030		847
	330	0905	122		949
0206	332		177	1709	849
0209	333		940	1710	159
	334		941		920
	335	0906	121		976
0210	46		939		1033
0211	9046	0907	120	1711	977





1010 2<sup>nd</sup> Avenue SW  
Cedar Rapids, IA 52404  
319:362-3271  
[www.villageneedlework.com](http://www.villageneedlework.com)

Madeira	Anchor	Madeira	Anchor	Madeira	Anchor
0212	13		343	1712	921
0213	11	0908	158		1034
0214	10		1032		1035
0301	323	0909	129	1713	236
	328		130		401
0302	9575	0910	175		922
0303	9	0911	131	1714	400
0304	6		137	1801	234
0304	8		142	1802	398
0305	778		146		399
	1011		176	1804	234
	1012	0912	132		397
0306	1009		139	1806	231
	1010		143	1807	232
0307	1003	0913	133	1808	233
0309	324		134	1812	1040
0310	1048		147		8581
0311	326	0914	123	1813	900
0312	1004	0915	178	1904	905
0313	1014	1001	128		1041
0314	1015		975	1905	393
0401	340		1031		902
	341		1037	1906	391
0402	338	1003	136	1907	830
	1013	1004	978	1908	387
0403	337	1005	979	1909	933
	868	1006	1036	1910	388
	882	1007	149	1911	378
0404	893		150		832
0405	1022	1008	127	1913	1050
	1323	1009	148	1914	359
0406	1024		152	2001	390
0407	1025	1011	162	2002	392
0408	26		164		899
	31	1013	140	2004	382
0409	33		161	2005	360
	41	1014	9159		380
0410	35	1036	160	2006	381
0411	29	1102	410	2007	358
0412	28	1103	433	2008	936
0413	27	1105	1038	2010	365
	40	1106	779	2011	1045



1010 2<sup>nd</sup> Avenue SW  
Cedar Rapids, IA 52404  
319:362-3271  
[www.villageneedlework.com](http://www.villageneedlework.com)

Madeira	Anchor	Madeira	Anchor	Madeira	Anchor
	52		1039		1047
	54	1107	170	2012	362
0414	55	1108	169		890
0501	892	1109	168	2013	361
0501	1026	1111	167		367
0502	23		928		372
0503	24	1112	185		942
0504	75	1113	186	2040	369
0505	970	1114	187	2101	885
0507	42		188	2103	373
0508	39	1203	189	2104	374
0509	47	1207	208	2106	375
0510	19	1209	240	2107	889
0511	1006		241	2108	888
0512	20		265	2109	852
	43	1210	206		956
	1005	1211	203	2110	853
0514	22	1212	204	2111	854
	44		209		855
	45		242	2112	898
0601	70	1213	205	2113	906
	72		243		944
	897		244	2114	277
0602	1028	1214	228		856
0603	59		245	2202	907
	69	1303	923	2207	886
	972	1304	229	2208	876
0604	76		230		887
	77	1305	227		891
0605	66	1306	239	2211	307
0606	25	1307	225		308
	36		238	2212	901
	74	1309	213	2213	309
0607	48		1043	2214	310
	73		1046	2301	311
0608	49		259		363
	1020	1310	214	2302	355
0611	38		215		370
0613	50	1311	216		1001
0614	60	1312	210	2304	351
0701	57		217		352
0701	68	1313	211		357



1010 2<sup>nd</sup> Avenue SW  
Cedar Rapids, IA 52404  
319:362-3271  
[www.villageneedlework.com](http://www.villageneedlework.com)

Madeira	Anchor	Madeira	Anchor	Madeira	Anchor
0702	62		212		371
	63		269	2305	884
0704	65		878	2306	349
	78	1314	683		1049
0705	1029		1044	2307	1002
0706	88	1401	261	2308	366
0707	89	1404	246		880
0708	87	1405	218	2309	368
0709	86	1409	253		376
0710	85		254		4146
0711	92	1410	255	2312	347
	96	1411	256		379
	97	1412	257		833
0712	98	1413	258		914
	99	1414	278		1007
0713	100	1501	280	2313	336
	101	1502	266		881
	112	1503	267	3402	339
0714	102	1504	262	9010	145
0801	90		268		
	95	1506	273		

### **Sampler (aka Gentle Art) / Anchor**

These charts are provided for your convenience, should you wish to use traditional floss for your project.

The following conversions are suggestions – in our opinion, the closest matches available. Where there is more than one Anchor color listed, it's because Sampler has no exact match.

Sampler	Anchor	Sampler	Anchor
Dried Thyme	268	Blue Jay	976 / 977
Pine	683	Morning Glory	1032
Avocado	266 / 267	Blue Berry	122 / 133
Blue Spruce	683	Midnight	1035
Evergreen	215	Claret	897
Willow	260	Old Brick	895
Celery	261	Cherry Wine	Christmas Red
Tarnished Gold	375	Red Grape	896
Gold Leaf	907	Mulberry	897
Summer Meadow	361	Pink Azalea	69

	1010 2 <sup>nd</sup> Avenue SW Cedar Rapids, IA 52404 319:362-3271 <a href="http://www.villageneedlework.com">www.villageneedlework.com</a>
---	--

Sampler	Anchor	Sampler	Anchor
Cinnamon	1046	Victorian Pink	75 / 76
Copper	338 / 339	Cameo Pink	892 / 893
Pumpkin	361 / 362	Porcelain	2
Brandy	1045 / 361	Purple Iris	118 / 119
Pineapple Sherbet	392	Lavender Potpourri	108 / 109
Apricot Blush	610	Highland Heather	870 / 871
Peach Ice Cream	279	Peacock	850 / 779
Slate	398	Ocean	167
Pebble	388 / 399	Sable	360
Bankers Gray	235 / 40	Cherry Bark	360
Black Crow	400	Wood Smoke	832
		Oatmeal	2 / 926

### Mill Hill Beads / Anchor

This is a list of Mill Hill antique, pebble, and glass beads and the suggested matching Anchor floss numbers. These color choices are based on personal opinion, information from kits/charts, and from the internet. Remember – this is a list of suggestions! Make sure you check the colors for yourself!

Bead Type	Bead #	Bead Name	Anchor
Antique	--	--	--
	03001	Black Onyx	403
	03002	Midnight	150
	03003	Antique Cranberry	20
	03004	Eggplant	873
	03005	Platinum Rose	968
	03006	Antique Copper	970
	03007	Silver Moon	920
	03008	Pewter	232
	03009	Charcoal	239
	03010	Slate Blue	401
	03011	Pebble Gray	235
	03012	Autumn Heather	123 / 393 / 872
	03013	Stormy Blue Heat	110 / 856
	03014	Matte Olive	263
	03015	Snow White	1
	03016	Vanilla	926
	03017	Peachy Blush	880
	03018	Coral Reef	894
	03019	Soft Wauve	970



1010 2<sup>nd</sup> Avenue SW  
Cedar Rapids, IA 52404  
319:362-3271  
[www.villageneedlework.com](http://www.villageneedlework.com)


Bead Type	Bead #	Bead Name	Anchor
	03020	Dusty Mauve	970
	03021	Royal Pearl	926
	03022	Royal Teal	877
	03023	Platinum Violet	873
	03024	Mocha	359
	03025	Wild Berry	897
	03026	Wild Blueberry	102 / 877
	03027	Caspian Blue	872 / 877
	03028	Juniper Green	217
	03029	Autumn Green	216 / 970
	03030	Camouflage	98 / 281
	03031	Smokey Heather	267 / 970
	03032	Peacock	216 / 683
	03033	Claret	317 / 873
	03034	Royal Amethyst	972 / 169 / 111
	03035	Royal Green	878
	03036	Cognac	972 / 99 / 280
Pebble	--	--	--
	05021	Silver	NA
	05025	Ruby	46
	05082	Black Forest	403
	05086	Midnight Rainbow	112 / 924 / 972
	05145	Pale Pink	49
	05147	Oriental Pearl	926
	05161	Crystal	NA
	05168	Sapphire	176
	05202	Amethyst	176
	05270	Bottle Green	877
	05555	New Penny	895
	05557	Old Gold	890
Glass	--	--	--
	00020	Royal Blue	134
	00081	Jet	236
	00777	Potpourri	NA
	00123	Cream	776
	00128	Yellow	288
	00143	Robin Egg Blue	167
	00145	Pink	23
	00146	Light Blue	117
	00148	Pale Peach	311
	00150	Gray	399
	00151	Ash Mauve	NA





1010 2<sup>nd</sup> Avenue SW  
Cedar Rapids, IA 52404  
319:362-3271  
[www.villageneedlework.com](http://www.villageneedlework.com)

Bead Type	Bead #	Bead Name	Anchor
	00161	Crystal	926
	00165	Christmas Red	46
	00167	Christmas Green	244
	00168	Sapphire	137
	00206	Violet	208 / 970
	00221	Bronze	358
	00252	Iris	110
	00275	Coral	882
	00283	Mercury	98 / 204 / 235
	00330	Copper	352
	00332	Emerald	246
	00358	Cobalt Blue	236 / 433
	00367	Garnet	44
	00374	Rainbow	99 / 216 / 236
	00423	Tangerine	209
	00479	White	1
	00525	Light Green	214
	00553	Old Rose	68
	00556	Antique Silver	847
	00557	Gold	936
	00561	Ice Green	208
	00968	Red	19
	02001	Pearl	300
	02002	Yellow Creame	292
	02003	Peach Creame	9
	02004	Tea Rose	31
	02005	Dusty Rose	75
	02006	Ice Blue	176
	02007	Satin Blue	175
	02008	Sea Breeze	185
	02009	Ice Lilac	109
	02010	Ice	926
	02011	Victorian Gold	907
	02012	Royal Plum	43
	02013	Red Red	47
	02014	Black	403
	02015	Sea Blue	920
	02016	Crystal Mint	875
	02017	Crystal Aqua	167
	02018	Crystal Pink	73
	02019	Crystal Honey	890
	02020	Cream de Mint	246

	<p>1010 2<sup>nd</sup> Avenue SW Cedar Rapids, IA 52404 319:362-3271 <a href="http://www.villageneedlework.com">www.villageneedlework.com</a></p>
---	---

Bead Type	Bead #	Bead Name	Anchor
	02021	Gun Metal	400
	02022	Silver	399
	02023	Root Beer	341
	02024	Heather Mauve	970
	02025	Heather	972
	02026	Crystal Blue	940



1010 2<sup>nd</sup> Avenue S.W.  
Cedar Rapids, IA 52404  
319:362-3271

[www.villageneedlework.com](http://www.villageneedlework.com)

### Olde Willow Stitchery Threads to Anchor Floss Conversions

Olde Willow	Anchor
001, Autumn Splendor	1002
002, Brown Sugar	378
003, Sweet Pea	254
004, Wild Berries	1024
005, Victorian Plum	85
006, Creamed Spinach	843
007, Grape Soda	110
008, Great Pumpkin	323
009, Egg Yolk	290
010, Psychedelia	225/329/136/290 /35
011, Tabasco	334
012, Green Peace	243
013, Purple Passion	100
014, Blue Mist	160
015, Indian Summer	324
016, Winter Wheat	306
017, Candied Yams	307
018, Antique Violet	96
019, Scarlet O'Hara	1098
020, Midnight Madness	1035
021, Black Raspberry	102
022, Cranberry Juice	68
023, September Sun	290/314
024, Harvest	277
025, Georgia Peach	344
026, Berry Patch	63/92
027, English Ivy	204
028, Purple Majestic	131/111
030, Cloves	374
031, Oceania	875
032, Evening rose	86

Olde Willow	Anchor
033, Floral Fantasy	96/149
034, Candy Corn	293/302/1010
035, Orange Sherbet	925
036, October	349
037, Meadow Green	255
038, Black Cherry	5975
039, Teal	1066
040, Churned Butter	288
041, Ashe	273
042, Apricot	328
043, Prairie Grain	280/891
044, Flight of Fancy	144/108/76
045, Fireworks	843/859/38
046, Bewitched	393/888
047, Flamingo	336
048, Blue Horizon	891/921
049, Sandy Beach	942
050, Ballerina	25
051, Caribbean Sunset	55/328/849
052, Monet	292/1020/1096
053, Rustic Red	13
054, Midnight Rain	922
055, Seascape	301/254
056, Tropical Storm	23/305/167
057, Angel Kisses	288/8
058, Black Cat	401
059, Winterberry	98/943
060, Christmas Eve	68/259/921/388
061, Heaven & Earth	55/876/977
062, Cat Eyes	876/874
063, Gingersnap	373
064, Navajo	779/324/311
065, Heavenly Skies	1038/311
066, Gypsy	939/92/68

Olde Willow	Anchor
067, Dancing Flame	1098/293/77
068, Stardust	86/144/108/399
069, Egyptian Nights	887/216/400
070, Iceland	48/868/1032/206
071, Ghost Dance	310/308/900
072, Weeping Willow	280
073, Mystic Skies	921/76/109
074, Northern Lights	921/68/874
075, Old Glory	1009/120/75
076, Indigo Glow	851
077, Drop Dead Red	39/26
078, Mountain Pine	241/258/874
079, Atlantis	1066/410
080, Spanish Moss	854
081, Summer Breeze	295/1034/109
082, La Luna	139/297
083, Pink Pizazz	62
084, Purple Rain	90/144/99
085, Misty Morning	159/103/96
086, Malibu Blue	1089/144/159
087, Bohemian Blue	160
088, Faerie Dust	900/388/342
089, Picasso	77/140/637/108
090, Moonlight Fire	46/1098/137
091, Overcast	140
092, Halloween	328/400
093, Spiced Pumpkin	1001
094, Meloncholy	1043/328/52
095, Raspberry Ripple	86
096, Amazon	1034/103/97
097, Autumn Dancer	852/888/38
098, Utopia	208/98/891
099, Mermaid	
100, Chocoholic	349
101, Midsummer Night's Dream	9159/1016/895
102, Frankenstein	255
103, Ghostly Grey	397

Olde Willow	Anchor
104, Magical Moon	235/1002/314
105, Witches Brew	895/264/90
106, R.I.P. Purple	98
107, Enchanted Pumpkin	305/303/304
108, Ghouls Gold	363
109, Vampire's Kiss	13
110, Dracula's Cape	905
111, Plum Madelyn	1029
112, Snow Crystals	2
113, Cotton Candy	57
114, Seaweed	263
115, Kelp	1043
200, Ackworth Brown	944
201, Chester County Blue	979
202, English Quaker Rose	29
203, Westtown Green	877
204, Quaker Star Gold	942
205, Yorkshire Blue	134
206, Bucks County Red	39
207, Token of Love Teal	779
208, Lancaster Gold	347
209, Nine Partners Grey	400
210, Emblem of Innocence Rose	8
211, Byberry Township Green	879
212, Philadelphia Red	20
213, Quaker School Blue	928
214, City of Bristol Brown	349
215, Allentown Brown	936
216, American Quaker Gold	306
217, Quaker Churchyard Adobe	370
218, Absent But Not Forgotten Rose	24
219, Quaker Meetinghouse Rust	339
220, Medallion Black	236
221, Hannah Beige	372

<b>Olde Willow</b>	<b>Anchor</b>
222, Octagon Blue	123
223, Quaker Swan	926
224, Berks County Rose	42
225, Rebbekah Green	257
226, 18 <sup>th</sup> Century Rose	13
227, Society of Friends Gold	279
228, Shacklewell Wine	896
229, Resignation Green	1044
230, Providence Brown	905
231, Solitude Green	268
232, Virtue Teal	1076
233, Gratitude Olde Rose	901
400, Texas Sunset	1090/66/92





## Kreinik to Treasure Braid Comparisons

### TREASURE BRAID COLORS

KREINIK COLOR	PETITE	SIZE 8	SIZE 12	SIZE 16
001-Silver	PB04	TR84	TR264	TR64
002-Gold	PB03	TR83	TR263	TR63
003-Red	PB07	TR87	TR267	TR67
005-Black	PB05	TR85	TR265	TR65
006-Blue	PB17			
007-Pink	PB13*		TR273	TR73
008-Green	PB06	TR86	TR266	TR66
009-Emerald	PB53*	TR95	TR275	TR75
012-Purple	PB11*		TR271	TR71
013-Beige	PB50		TR270	TR70
014-Sky Blue	PB09		TR269	TR69
015-Chartreuse	PB52*		TR283	
018-Navy	PB18	TR96	TR276	TR76
019-Pewter	PB59			
021-Copper	PB39		TR282	
022-Brown	PB51			
023-Lilac	PB12*			TR72*
024-Fuchsia	PB24		TR281	
026-Amethyst	PB11		TR271	TR71
027-Orange	PB42		TR286	
028-Citron	PB40		TR261	TR61
029-Turquoise	PB43	TR97	TR277	TR77
031-Crimson	PB07*		TR273*	TR73*
032-Pearl	PB10	TR80	TR260	TR60
033-Royal Blue	PB08*			
034-Confetti	PB16	TR99	TR279*	TR79
041-Confetti Pink	PB15	TR98	TR278	TR78
061-Ruby	PB19			
091-Star Yellow	PB201			
092-Star Pink	PB206			
094-Star Blue	PB204			
102-Vatican	PB54	TR82	TR262	TR62
221-Antique Gold	PB25	TR90	TR220	TR50
238-Christmas	PB45			
271-Plum	PB27			
339-Tropical Teal	PB38*			
684-Aquamarine	PB22*	TR97	TR277	TR77
713-Pink Mauve	PB60			
1223-Passion Plum	PB12*			
1432-Blue Ice	PB09*			
4639-Light Aqua	PB62			
9192-Light Peach	PB202			
9294-Periwinkle	PB205			
001HL-White Hi Lustre	PH01	HG82		HG62
002HL-Gold Hi Lustre	PH03	HG81		HG61
003HL-Red Hi Lustre		HG85		HG65
005HL-Black Hi Lustre		HG83		HG63
007HL-Pink Hi Lustre	PB13*	HG86		HG66
008HL-Green Hi Lustre	PB20*	TR95*		TR75*
009HL-Emerald Hi Lustre	PB20*	HG84*		HG64*
012HL-Purple Hi Lustre	PB11		TR271	TR71
014HL-Sky Blue Hi Lustre	PB09*		TR229	TR69
018HL-Navy Hi Lustre	PB63			
021HL-Copper Hi Lustre	PB55	HG87	TR274	HG67
051HL-Sapphire Hi Lustre	PB08	TR88	TR268	TR68
052HL-Bronze Hi Lustre	PB49			
080HL-Garnet Hi Lustre			TR284	
100HL-White Hi Lustre	PB23			
202HL-Aztec Gold Hi Lustre	PH01*	TR81*	TR261*	TR61*
153V-Vintage Burgundy	PB29			

\*Denotes closest possible match Summer 2005



1010 2<sup>nd</sup> Avenue S.W.  
Cedar Rapids, IA 52404  
319:362-3271  
www.villageneedlework.com

## Anchor Floss to DMC Floss Conversions

**Note:** This chart is presented as a guide only – a guide to assist you in selecting colors. Please use your own judgment in making the final decision on color interpretation.

Anchor	DMC
1	B5200
2	Blanc
6	353
8	353*
9	352*
10	351 ()
11	351
13	817
19	304
20	3777
22	814 ()
23	963
24	761*
25	3716
26	894*
27	893
28	956 ()
29	209 ()
31	957
33	893*
35	891*
36	3326
38	956*
39	309
40	956
41	956

Anchor	DMC
42	309*
43	815*
44	815*
45	814*
46	666
47	321*
48	818*
49	3689*
50	957*
52	603*
54	956*
55	604*
57	602*
59	3350
60	3806*
62	3806*
63	602
65	3803*
66	604 ()
68	3804 ()
69	3803
70	3865 ()
72	3865 ()
73	963*
74	605
75	3733
76	3687
77	3687 ()
78	917 ()
86	3609
86	3609*
87	3607
88	917
89	718

Anchor	DMC
90	3836
92	552 ()
94	915 ()
95	3609 ()
96	3608 ()
97	554 ()
98	553*
99	552 ()
100	552*
101	550*
102	550*
103	3609 ()
108	210*
109	209
110	333 ()
112	3837
117	794*
118	340*
119	3840
120	3840
121	793*
122	3807*
123	791*
127	823*
128	3756*
129	3325 ()
130	799*
131	798
132	798*
133	820 ()
134	796*
136	799
137	798*
139	797*

Anchor	DMC
140	813*
142	825*
143	824*
144	827*
145	799
146	798
147	798*
148	311
149	336*
150	336*
152	939
158	775 ()
159	800
160	519*
161	516*
162	3842
164	311 ()
167	598*
169	3765
170	3765*
175	809
176	3839
177	792
178	791
185	964*
186	959
187	958
188	943*
189	943
203	954
204	913*
205	912*
206	564*
204	913*

An asterisk (\*) indicates a close match; a () symbol indicates an approximate match.

Anchor	DMC
205	912*
206	564*
208	562*
209	912*
210	562*
211	3818*
212	561*
213	369*
214	368*
215	320
216	320*
217	367 ()
218	319*
225	703 ()
226	702*
227	701
228	910*
229	700
230	909
231	453*
232	452
233	451
234	762*
235	414
238	703*
239	702 ()
240	368*
241	989*
242	368 ()
243	702*
244	701*
246	986
253	472*
254	472*
255	907
256	906
257	905*
258	905*

Anchor	DMC
259	772*
260	524 ()
261	3347 ()
262	3052*
263	935*
264	3348*
265	471*
266	3347*
267	469*
268	937
269	3051*
271	819
273	3787*
274	928
275	712
276	712*
277	829*
278	3819
279	3819*
280	722
281	732*
288	445*
289	307*
290	973
291	973*
292	3078
293	727
295	727*
297	444
298	725 ()
300	745
301	744
302	743*
303	742
304	741
305	726*
306	725
307	783

Anchor	DMC
308	782
309	780*
310	780*
311	3855
313	3854
314	741*
316	971*
323	722
324	721
326	720
328	3341
329	947*
330	947
332	946*
333	606
334	606
336	754*
37	3778 ()
338	356 ()
339	920 ()
340	919
341	918*
342	211
343	3752*
347	402
349	201*
351	400*
352	300*
355	975*
357	300
358	375
359	801
360	898*
361	738*
362	437
363	977*
365	3826*
366	739*

Anchor	DMC
367	3774 ()
368	437 ()
369	436 ()
370	975*
371	975
372	738*
373	3828*
374	420*
375	420
376	3864
378	3773*
379	3863
380	838*
381	938*
382	3371
386	3823
387	712*
388	842*
390	822*
391	3033*
392	642 ()
393	3790 ()
397	3024*
398	648 ()
399	647 ()
401	413 ()
403	310
410	995
433	996
681	3051
683	500
778	3774*
779	931 ()
830	644*
831	642 ()
832	840 ()
842	3013*
843	3012*

An asterisk (\*) indicates a close match; a () symbol indicates an approximate match.

Anchor	DMC
844	3012
845	3011
846	936*
947	3072
848	928
849	926*
850	926*
851	924*
852	3047 ()
853	3047*
854	371*
855	371
856	370 ()
858	524*
859	523
860	522*
861	520*
862	520
868	758
869	3743
870	3042
871	3041*
872	3740*
873	3740
874	834 ()
875	3817*
876	3816*
877	8315
878	319 ()
879	561*
880	3774
881	945*
882	758*
883	758 ()
884	920 ()
885	822*
886	3047*
887	3046*

Anchor	DMC
888	3045*
889	610*
890	729*
891	676*
892	3713 ()
893	224*
894	224*
895	223
896	3721
897	3857
898	3790 ()
899	3782 ()
900	648*
901	680*
903	3790*
904	3790
905	3021 ()
906	829
907	729 ()
914	3064
920	932
921	931*
922	930*
923	699
924	731
925	740
926	712
928	3761
933	543
936	632*
939	793*
940	3838
941	792*
942	738*
943	437*
944	420*
945	834*
956	3047 ()

Anchor	DMC
968	225 ()
969	778 ()
970	3687*
972	3803*
975	828*
976	3752*
977	334
978	322*
979	312
1001	976
1002	977
1003	922
1004	920*
1005	816*
1006	304
1007	3772
1008	3773
1009	3770
1010	951
1011	948*
1012	948*
1013	3778
1014	355
1015	3777
1016	3727*
1017	3727
1018	3726
1019	315*
1020	225
1021	3713*
1022	760*
1023	3712*
1024	3712
1025	347
1026	225*
1027	3722
1028	3685*
1029	915*

Anchor	DMC
1030	3746*
1031	775
1032	3753
1033	3752
1034	932*
1035	930
1036	3750
1037	3756
1038	519
1039	807*
1040	647 ()
1041	844
1042	504*
1043	369
1044	895
1045	436
1046	435
1047	402*
1048	3776*
1049	301
1050	839*
1060	3811
1062	598
1064	597
1066	3809
1068	3808
1070	993
1072	992
1074	3814
1076	991
1080	842
1082	841
1084	840
1086	839
1088	838
1089	3843
1090	996
1092	964

An asterisk (\*) indicates a close match; a () symbol indicates an approximate match.

Anchor	DMC
1094	605
1096	3753
1098	3801
1200	62*
1201	48*
1202	112*
1203	57*
1204	107*
1206	115*
1207	99 ()
1208	95*
1209	126*
1210	121*
1211	93*
1212	67*
1213	101*
1214	125*
1215	114*
1216	94*
1217	104*
1218	105*
1219	108*
1220	51*
1223	53 ()
1243	111*
4146	950
5975	3830*
8581	3022*
9046	666*
9159	3841
9575	3778*

An asterisk (\*) indicates a close match; a () symbol indicates an approximate match.





1010 2<sup>nd</sup> Avenue S.W.  
Cedar Rapids, IA 52404  
319:362-3271  
[www.villageneedlework.com](http://www.villageneedlework.com)

### DMC Light Effects to Kreinik #4 Braid

DMC	Kreinik #4 Braid
E990	053F – Lime
E980	054F – Lemon-Lime
E5200	032 – Pearl
E3747	9294 – Periwinkle
E818	092 – Star Pink
E746	091 – Star Yellow
E211	093 – Star Mauve
E135	044 – Confetti Blue
E130	042 – Confetti Fuchsia
E3849	029 – Turquoise
5290	006 – Blue
3837	026 – Amethyst
3825	033 – Royal Blue
E815	061 – Ruby
E703	015 – Chartreuse
E699	008 – Green
E334	014 – Sky Blue
E321	003 – Red
E316	007 – Pink
E155	012 – Purple
E940	052F – Grapefruit
E3685	080HL – Garnet Hi Lustre
E898	022 – Brown
E436	002V – Vintage Gold
E415	001V – Vintage Silver
E168	001C – Silver Cord
E301	021C – Copper Cord
E317	105C – Antique Silver Cord
E677	104C – Colonial Gold
E3821	002C – Gold Cord

E3852	002J – Japan Gold
E967	9192 – Light Peach
E966	9194 – Star Green
E747	194 – Pale Blue



1010 2<sup>nd</sup> Avenue S.W.  
Cedar Rapids, IA 52404  
319:362-3271  
[www.villageneedlework.com](http://www.villageneedlework.com)

### Inches to Centimeters Conversion

**Note:** This chart is presented as a guide only – a guide to assist you.

Inches	Centimeters
1 5/8	4
2	5
2 3/8	6
2 3/4	7
3 1/8	8
3 1/2	9
4	10
4 3/8	11
4 3/4	12
5 1/8	13
5 1/2	14
6	15
6 1/4	16
6 3/4	17
7 1/8	18
7 1/2	19
8	20
8 1/4	21
8 5/8	22
9	23
9 1/2	24
9 7/8	25
10 1/4	26
10 5/8	27
11	28
11 3/8	29
11 3/4	30
12 1/4	31
12 1/2	32
13	33
13 3/8	34

Inches	Centimeters
13 3/4	35
14 1/8	36
14 1/2	37
15	38
15 3/8	39
15 3/4	40
16 1/8	41
16 1/2	42
17	43
17 3/8	44
17 3/4	45
18	46
18 1/2	47
18 7/8	48
19 1/4	49
19 5/8	50
20	51
20 1/2	52



